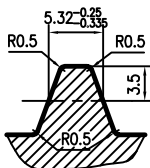
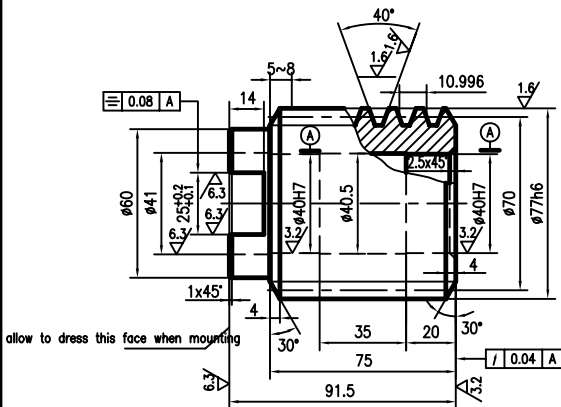


the other  $\nabla^{12.5}$

normal profile  
4:1



transverse module	$m_t$	3.5
thread number	$Z_2$	4
nominal pressure angle	$\alpha$	20°
modification coefficient	$x_2$	
addendum coefficient	$ha_2$	1
accuracy level		8-DC
match	worm type	ZA
worm	threads number	$Z_1$ 40
	helix direction	right
	lead angle	$\gamma$ 11°18'36"
part no.	accumulative pitch allowance	$f_p$ ±0.022
	limit pitch error	$\pm f_{pt}$ 0.04
contact	pitch tooth	0.03
point %	pitch tooth	0.036



the other chamfers 2X45°